

# Product Sheet

## H\_PD-L1 Raji Cell Line

Catalog number: GM-C03541

Version 3.3.1.260528

<b>Description</b>	H_PD-L1 Raji Cell Line is a clonal stable Raji cell line that constitutively expresses the human PD-L1 gene, constructed using non-viral transfection.
<b>Quantity</b>	5E6 Cells per vial, 1 mL
<b>Product Format</b>	1 vial of frozen cells
<b>Shipping</b>	Shipped on dry ice
<b>Storage Conditions</b>	Liquid nitrogen immediately upon receipt
<b>Target</b>	Human_PD-L1(CD274)
<b>Gene ID/Uniprot ID</b>	Q9NZQ7-1
<b>Host Cell</b>	Raji
<b>Recovery Medium</b>	RPMI 1640+10% FBS+1% P.S
<b>Growth medium</b>	RPMI 1640+10% FBS+1% P.S+3 µg/mL Blasticidin
<b>Note</b>	None
<b>Freezing Medium</b>	90% FBS+10% DMSO
<b>Growth properties</b>	Suspension
<b>Growth Conditions</b>	37°C, 5% CO <sub>2</sub>
<b>Mycoplasma Testing</b>	The cell line has been screened to confirm the absence of Mycoplasma species.
<b>Safety considerations</b>	Biosafety Level 2
<b>Note</b>	It is recommended to expand the cell culture and store a minimum of 10 vials at an early passage for potential future use.

## Materials

Reagent	Manufacturer/Catalogue No.
RPMI 1640	gibco/C11875500BT
Fetal Bovine Serum	ExCell/FSP500
Pen/Strep	Thermo/15140-122
Blasticidin	Genomeditech/GM-040404
Anti-H_CD274(PDL1) hIgG1 Antibody(Atezolizumab)	Genomeditech/GM-31740AB
Anti-PD1 hIgG4 Antibody(Pembrolizumab)	Genomeditech/GM-52674AB
H_PD-1 Reporter Jurkat Cell Line	Genomeditech/GM-C07928

## Figures

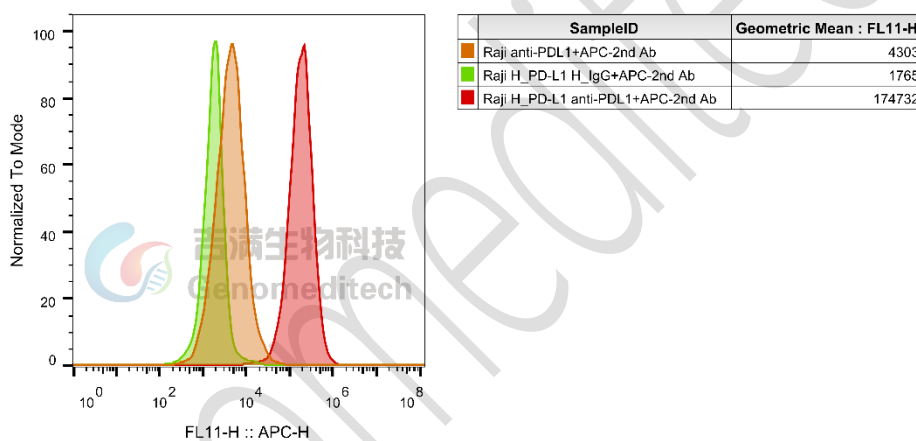


Figure 1 | H\_PD-L1 Raji Cell Line (Cat. GM-C03541) was determined by flow cytometry using Anti-H\_CD274(PDL1) hIgG1 Antibody(Atezolizumab) (Cat. [GM-31740AB](#)).

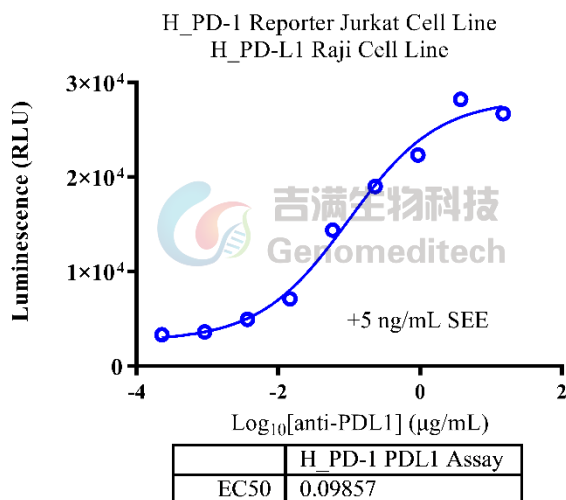


Figure 2 | Response to Anti-H\_CD274(PDL1) hIgG1 Antibody (Atezolizumab). The Atezolizumab (Cat. [GM-31740AB](#)) was serially diluted and incubated with 2E4 cells/well of the H\_PD-L1 Raji Cell Line in a 96-well plate for 30 minutes. Meanwhile, 1E5 cells/well of the H\_PD-1 Reporter Jurkat Cell Line (Cat. [GM-C07928](#)) was pre-incubated with 0.5 ng/well of SEE in a 96-well plate for 30 minutes. Afterward, the two treated cell mixtures were combined in equal volumes and co-incubated in assay buffer (RPMI 1640 + 1% FBS + 1% P.S.) for 16 hours. The firefly luciferase activity was measured using the Luciferase Reporter Assay Kit (Genomeditech). The results indicated a maximum fold of approximately [8.3]. Data are presented based on drug mass concentration.

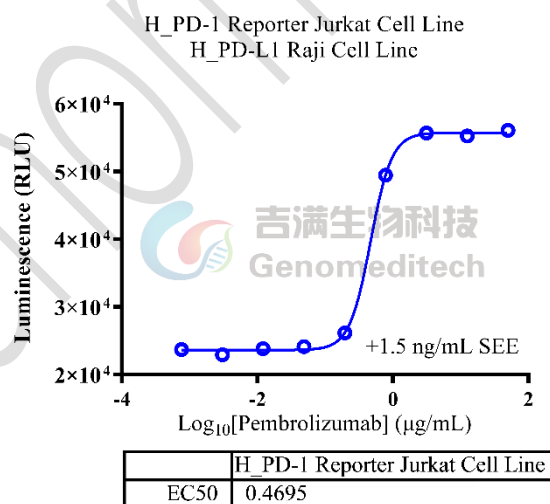


Figure 3 | Response to Anti-PD-1 Human IgG4 Antibody (Pembrolizumab). Having been pre-incubated with 0.15 ng/well of SEE for 30 minutes, 2E4 cells/well of the H\_PD-L1 Raji Cell Line (Cat. [GM-C03541](#)) were subsequently incubated with serially diluted pembrolizumab for 5 minutes. Upon completion, 1E5 cells/well of the H\_PD-1 Reporter Jurkat Cell Line (Cat. [GM-C07928](#)) were introduced into the assay buffer, and the reaction was allowed to proceed for 16 hours. The firefly luciferase activity was measured using the Luciferase Reporter Assay Kit

(Genomeditech). The results indicated a maximum fold of approximately [2.3]. Data are presented based on drug mass concentration.

## Cell Recovery

Recovery Medium: RPMI 1640+10% FBS+1% P.S

To insure the highest level of viability, thaw the vial and initiate the culture as soon as possible upon receipt. If upon arrival, continued storage of the frozen culture is necessary, it should be stored in liquid nitrogen vapor phase and not at  $-70^{\circ}\text{C}$ . Storage at  $-70^{\circ}\text{C}$  will result in loss of viability.

- a) Thaw the vial by gentle agitation in a  $37^{\circ}\text{C}$  water bath. To reduce the possibility of contamination, keep the O-ring and cap out of the water. Thawing should be rapid (approximately 2 - 3 minutes).
- b) Remove the vial from the water bath as soon as the contents are thawed, and decontaminate by dipping in or spraying with 70% ethanol. All of the operations from this point on should be carried out under strict aseptic conditions.
- c) Transfer the vial contents to a centrifuge tube containing 5.0 mL complete culture medium. And spin at approximately  $176 \times g$  for 5 minutes. Discard supernatant.
- d) Resuspend cell pellet with the recommended complete medium. And dispense the suspension into an appropriate culture flask and initially place the flask in an upright position after thawing.
- e) Incubate the culture at  $37^{\circ}\text{C}$  in a suitable incubator. A 5%  $\text{CO}_2$  in air atmosphere is recommended if using the medium described on this product sheet.

## Cell Freezing

Freezing Medium: 90% FBS+10% DMSO

- a) Centrifuge at  $176 \times g$  for 3 minutes to collect cells.
- b) Resuspend the cells in pre-cooled freezing medium and adjust the cell density to  $5 \times 10^6$  cells/mL.
- c) Aliquot 1 mL into each vial.
- d) Place the vial in a controlled-rate freezing container and store at  $-80^{\circ}\text{C}$  for at least 1 day, then transfer to liquid nitrogen as soon as possible.

## Cell passage

Growth medium: RPMI 1640+10% FBS+1% P.S+3  $\mu\text{g}/\text{mL}$  Blasticidin

Approximately 48-72 hours after the initial thawing, the cells can be passaged for the first time. After this initial passage, the culture medium can be adjusted to growth medium supplemented with antibiotics. If cells are not passaged within 48 hours, it is recommended to add some fresh recovery medium and place the flask horizontally.

- a) When the cell density reaches 1 -  $1.2 \times 10^6$  cells/mL, subculture the cells. Do not allow the cell density to exceed  $1.2 \times 10^6$  cells/mL.
- b) It is recommended to use T-25 flasks for subculturing.

- c) These cells are suspension cells, and it is recommended to use the "half-medium change" method to maintain optimal cell conditions during passaging.
- d) During passaging, you can directly add fresh growth medium to the culture flask, gently pipette to resuspend the cells, and then transfer the cell suspension to a new T-25 flask for continued culture.

**Subcultivation Ratio: Maintain cultures at a cell concentration between 2.5E5 and 8E5 viable cells/mL.**

**Medium Renewal: Every 2 to 3 days**

## Notes

- a) These cells are sensitive to density, so please ensure that the cell density is maintained within an appropriate range during culture and subculturing.
- b) During the first passage, pay attention to the nutrient supply; if not subculturing, make sure to add fresh recovery medium every other day as needed.

## Sequence

CD274(PD-L1) [Q9NZQ7-1](#)

MRIFAVFIFMTYWHLNNAFTVTVPKDLYVVEYGSNMTECKFPVEKQLDLAALIVYWEMEDKNIIQFVHGEE  
 DLKVQHSSYRQRARLLKDQLSLGNAALQITDVKLQDAGVYRCMISYGGADYKRITVKVNAPYNKINQRILV  
 VDPVTSEHELTCQAEGYPKAEVIWTSSDHQVLSGKTTTTNSKREEKLFNVTSTLRINTTTNEIFYCTFRRLDPE  
 ENHTAELVIPPLAHPNERTHLVILGAILLCLGVALTFIFRLRKGRMMDVKKCGIQDTNSKKQSDTHLEET\*

## Related Products

PD-1:PD-L1(B7-H1):PDL2	
<a href="#">Mouse_PDL1 KO CT26 Cell Line</a>	<a href="#">Mouse_PDL1 KO LLC1 Cell Line</a>
<a href="#">Mouse_PDL1 KO MC38 Cell Line</a>	<a href="#">aAPC(OKT3) PDL1 CHO-K1 Cell Line</a>
<a href="#">H_PD-1 Reporter Jurkat Cell Line</a>	<a href="#">H_PD1 SHP1 Reporter Jurkat Cell line</a>
<a href="#">H_PD1 SHP2 Reporter Jurkat Cell Line</a>	<a href="#">H_PDCD1LG2(PDL2) aAPC CHO-K1 Cell Line</a>
<a href="#">Mouse PDL1 aAPC CHO-K1 Cell Line</a>	<a href="#">Mouse_PD-1 Reporter Jurkat Cell Line</a>
<a href="#">Canine_PD-1 CHO-K1 Cell Line</a>	<a href="#">Canine_PD-1 HEK-293 Cell Line</a>
<a href="#">Cynomolgus_PD1 CHO-K1 Cell Line</a>	<a href="#">Cynomolgus_PD-L1 HEK-293 Cell Line</a>
<a href="#">H_CD274(PD-L1) CHO-K1 Cell Line</a>	<a href="#">H_CD274(PD-L1) MC38 Cell Line</a>
<a href="#">H_PDCD1(PD-1) CHO-K1 Cell Line</a>	<a href="#">H_PDCD1(PD-1) HEK-293 Cell Line</a>
<a href="#">H_PDCD1LG2(PDL2) CHO-K1 Cell Line</a>	<a href="#">H_PDL1 CT26(mouse PDL1 KO) Cell Line</a>
<a href="#">H_PD-L1 HEK-293 Cell Line</a>	<a href="#">H_PDL1 LLC1(mouse_PDL1 KO) Cell Line</a>
<a href="#">H_PDL1 LLC1(mouse_PDL1 KO) Cell Line</a>	<a href="#">H_PDL1 MC38(mouse PDL1 KO) Cell Line</a>
<a href="#">M_PDCD1(PD-1) CHO-K1 Cell Line</a>	<a href="#">Rhesus_PDCD1(PD-1) CHO-K1 Cell Line</a>
<a href="#">Anti-Canine_PD1 mIgG2a Antibody(4F12-E6)</a>	<a href="#">Anti-CTLA-4/PD-1 hIgG1 Bispecific Antibody(Cadonilimab)</a>
<a href="#">Anti-CTLA4×PD-1 hIgG1 Reference Antibody (Cadbio)</a>	<a href="#">Anti-H_CD274(PDL1) hIgG1 Antibody(Atezolizumab)</a>
<a href="#">Anti-H_PDCD1(PD1) hIgG1 Antibody(Budigalimab)</a>	<a href="#">Anti-H_PDCD1LG2 mIgG1 Antibody(3G2)</a>

Anti-H_PDL1 hIgG1 Reference Antibody(Atezbio)	Anti-mouse PD1 RIgG2a Antibody(RMP1-14)
Anti-mouse PD-L1 mIgG1 Antibody(10F.9G2)	Anti-Mouse_PD1 mIgG1 Antibody(29F.1A12)
Anti-mouse_PD1 mIgG1 Antibody(RMP1-14)	Anti-Mouse_PD1×VEGF hIgG1 Bispecific Antibody
Anti-PD1 hIgG1 Reference Antibody (Perbio)	Anti-PD1 hIgG1 Reference Antibody(Rosnbio)
Anti-PD1 hIgG4 Antibody(Pembrolizumab)	Anti-PD1 hIgG4 Reference Antibody (Nivbio)
Anti-PD1 hIgG4 Reference Antibody (Pembio)	Anti-PD1 hIgG4 Reference Antibody (Sintbio)
Anti-PD-1 hIgG4 Reference Antibody (Torbio)	Anti-PD1 hIgG4 Reference Antibody(Cambio)
Anti-PD-1 hIgG4 Reference Antibody(Tislbio)	Anti-PD1-IL2v Fusion hIgG1 Antibody(2149)
Anti-PD1-IL2v Fusion hIgG1 Antibody(KY-0118)	Anti-PD-L1 hIgG1 Reference Antibody(Avebio)
Anti-PDL1 hIgG4 Reference Antibody(Adebio)	Anti-PD-L2 hIgG1 Antibody(Hz25G4-1.1)
Anti-VEGF×PD1 hIgG1 Reference Antibody (Ivobio)	Anti-VEGF×PD-L1 hIgG1 Bispecific Antibody (Pumibio)
Anti-VEGF×PD-L1 hIgG1 Bispecific Antibody (pumitamig)	
Biotinylated Human PD1 Protein; His-Avi Tag	Biotinylated Human PDL1 Protein; His-Avi Tag
Canine PD1 Protein; hFc Tag	Cynomolgus PDL1 Protein; His Tag
Human PD1 Protein; hFc Tag	Human PD1 Protein; His Tag
Human PDL1 Protein; His Tag	Human PDL1 Protein; mFc Tag
Human PDL2 Protein; mFc Tag	Mouse PDL1 Protein; His Tag

## License Agreement:

**By purchasing and using this cell line product, the user voluntarily agrees to accept and abide by the following policies:**

- This cell line product is restricted to research use only and shall not be used for any commercial purposes.
- This product is strictly prohibited from being used in the diagnosis or treatment of human or animal diseases, and shall not be directly used in experiments involving humans.
- Users and their contractors engaged for their benefit may use this material and its derivatives only within the agreed research scope; modification of the material is not permitted, nor may it be distributed, sold, transferred, or otherwise provided to any other entity (including affiliates).
- If use beyond the above scope is required, prior written permission from Genomeditech (Shanghai) Co.,Ltd. must be obtained. For details, please contact Genomeditech (Shanghai) Co.,Ltd.