

Anti-LPAR2 hlgG1 Antibody(E3)

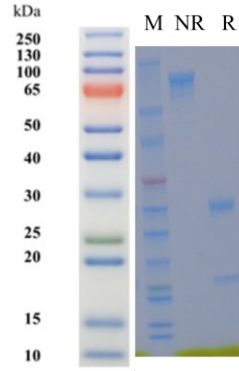
Product information

GM-88369AB-10	10 µg
GM-88369AB-100	100 µg
GM-88369AB-1000	1 mg

Antibody Information

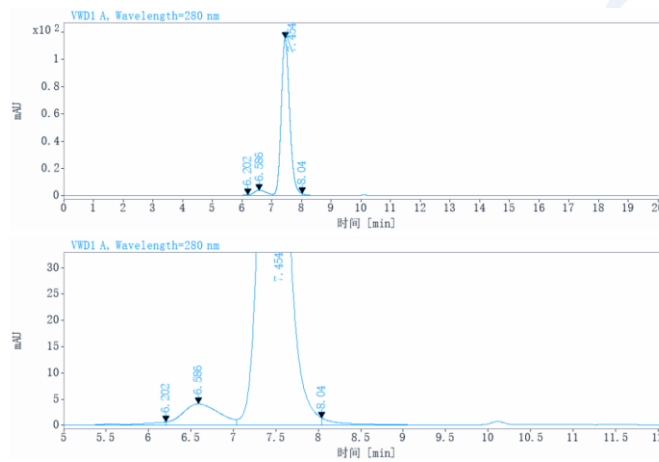
Species Reactivity	Human
Clone	E3
Source/Isotype	Human IgG1,Kappa
Application	/
Target	Detects LPAR2
Gene	LPAR2
Other Names	EDG-4, EDG4, LPA-2, LPA2
Gene ID	9170 (Human)
Background	LPAR2(lysophosphatidic acid receptor 2) , a key gene encoding G protein-coupled receptors, belongs to the lysophosphatidic acid (LPA) receptor family and plays a multi-modal signal regulation role in physiological and pathological processes. This gene is involved in the regulation of cell proliferation, migration, survival and differentiation by activating downstream pathways such as MAPK/ERK, Rho/ROCK and NF-kb, its expression is widely distributed in digestive system, central nervous system, lymphoid glands and sensory organs, and participates in glutamatergic synaptic function as a component of presynaptic active zone membrane.
Storage	Store at 2-8°C short term (1-2 weeks).Store at ≤ -20°C long term. Avoid repeated freeze-thaw.
Formulation	Supplied as a 0.2 µm filtered solution of PBS, pH7.2-7.4.
Endotoxin	< 1 EU/mg, determined by LAL gel clotting assay

SDS-PAGE



On SDS-PAGE under reducing (R)/non-reducing(N-R) condition. The gel was stained overnight with Coomassie Blue. The purity of the protein is greater than 95%.

SEC-HPLC



The purity of this product is more than 90% verified by SEC-HPLC.