

Cynomolgus LY6G6D Protein; His Tag

Product Information

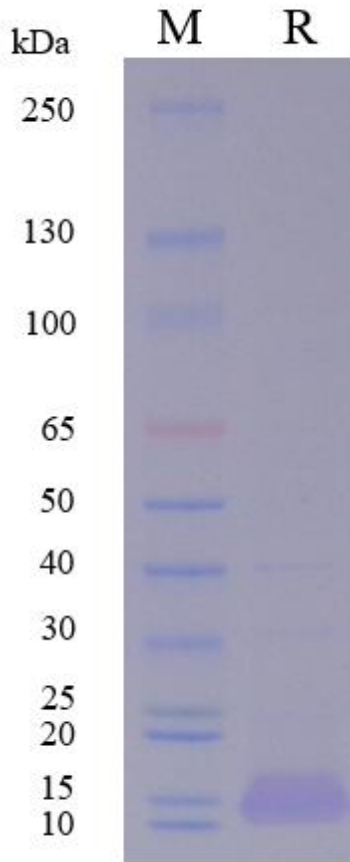
Product Name	Cynomolgus LY6G6D Protein; His Tag
Storage temp	Store at $\leq -70^{\circ}\text{C}$, stable for 6 months after receipt. Recommend to aliquot the protein into smaller quantities for optimal storage. Please minimize freeze-thaw cycles.
Catalog# / Size	GM-88638RP-100 / 100 μg GM-88638RP-1000 / 1 mg

Protein Information

Alternative Names	lymphocyte antigen 6 family member G6D, C6orf23, G6D, LY6-D, MEGT1, NG25
Source	Cynomolgus LY6G6D Protein; His Tag (GM-88638RP) is expressed from human 293 cells (HEK-293). It contains AA Asn 20 - Ser 104 (Accession # WAK97502.1). This protein carries a His tag at the N-terminus.
Purity	> 95% as determined by SDS-PAGE
Endotoxin	< 1 EU/ μg , determined by LAL gel clotting assay
Predicted Mol Mass	10.0 kDa
Formulation	Supplied as a 0.2 μm filtered solution of PBS, pH7.2-7.4.
Description	<p>LY6G6D protein, full name Lymphocyte Antigen 6 Family Member G6D, is an important cell surface protein and a member of the leukocyte antigen-6 (LY6) superfamily. LY6G6D protein is attached to the cell membrane by a glycosylphosphatidylinositol (GPI) anchor and plays a role in cell surface signaling in normal cells .</p> <p>Abnormal expression of LY6G6D protein is closely associated with the occurrence and development of various malignant tumors, especially colorectal cancer (CRC). In tumor cells, overexpression of LY6G6D protein is particularly prevalent in the microsatellite stable (MSS) subtype of colorectal cancer, as well as in left-sided tumors and the canonical genomic subgroup, thereby serving as a promising tumor-associated antigen .</p> <p>In summary, LY6G6D protein plays a crucial role in the occurrence and development of colorectal cancer, and is of great significance for understanding the pathogenesis of tumors, selecting targeted treatment strategies, and evaluating patient prognosis.</p>

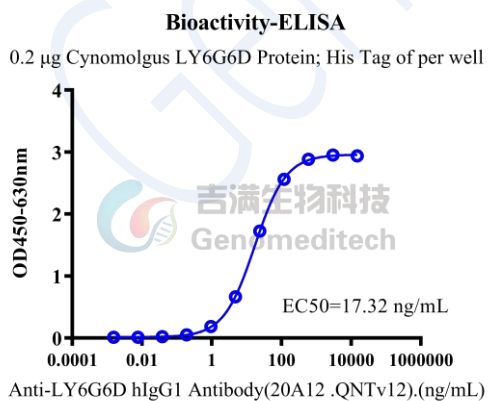
Version:4.0

SDS-PAGE



On SDS-PAGE under reducing (R) condition. The gel was stained overnight with Coomassie Blue. The purity of the protein is greater than 95%.

Bioactivity-ELISA



Cynomolgus LY6G6D Protein; His Tag (Catalog # GM-88638RP) was immobilized at 2 μ g/ml (100 μ L/well).

Increasing concentrations of Anti-LY6G6D hIgG1 Antibody (20A12.QNTv12) (Catalog # GM-58917AB) were added.

Version:4.0