

Anti-EGFR×Met hlgG1 Reference Antibody (Amivanbio)

Product Information

Product Name	Anti-EGFR×Met hlgG1 Reference Antibody (Amivanbio)
Storage temp.	Store at 2-8°C short term (1-2 weeks).Store at ≤ -20°C long term. Avoid repeated freeze-thaw.
Catalog# / Size	GM-87783MAB-1mg / 1 mg GM-87783MAB-5mg / 5 mg GM-87783MAB-25mg / 5 mg*5 vials GM-87783MAB-50mg / 50 mg GM-87783MAB-100mg / 50 mg*2 vials

Antibody Information

Expression System	CHO
Aggregation	< 5% as determined by SEC-HPLC
Purity	> 95% as determined by SDS-PAGE
Endotoxin	< 1 EU/mg, determined by LAL gel clotting assay
Sterility	0.2 µm Filtered
Target	EGFR&Met
Clone	Amivantamab
Alternative Names	EGFR: ERBB,ERBB1,HER1,PIG61,mENA Met: MET,AUTS9,HGFR,RCCP2,c-Met
Source/Isotype	Human IgG1 (REEM) F405L, K409R ,Kappa
Application	Bioactivity-ELISA
Description	Amivantamab, an EGFR-MET bispecific monoclonal antibody, is primarily used in the treatment of non-small-cell lung carcinoma (NSCLC) , especially in patients with EGFR Exon 20 insertion mutations (EGFR Exon 20ins) , and as a treatment option after osimertinib resistance. It inhibits tumor cell proliferation and recruits immune cells, such as natural killer cells and macrophages, for anticancer activities by simultaneously blocking EGFR and MET signaling pathways. In clinical trials, Amivantamab in combination with chemotherapy has significantly reduced the risk of tumor progression or death in patients, improved tumor control time and objective response rates, and shown efficacy against brain metastases. In addition, Amivantamab combined with Lazertinib has also shown superior efficacy to osimertinib in the first-line treatment, providing patients with new treatment options.

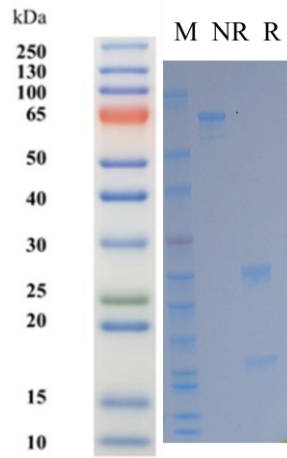
Version:3.3

Formulation

phosphate-buffered solution, pH 7.2-7.4.

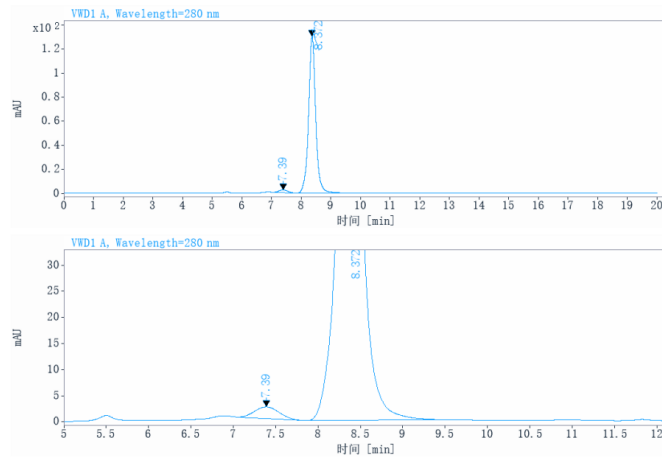
Data Examples

SDS-PAGE



On SDS-PAGE under reducing (R)/non-reducing(N-R) condition. The gel was stained overnight with Coomassie Blue. The purity of the protein is greater than 95%.

SEC-HPLC



The purity of this product is more than 95% verified by SEC-HPLC.

Bioactivity-ELISA

Human EGFR Protein; His Tag (Catalog # GM-87561RP) was immobilized at 2 µg/ml (100 µL/well) on Anti-His mIgG2a Antibody (Catalog # GM-59493AB) (0.6 µg/well) precoated. Increasing concentrations of Anti-EGFR×Met hIgG1 Reference Antibody (Amivanbio) (Catalog # GM-87783MAB) were added.

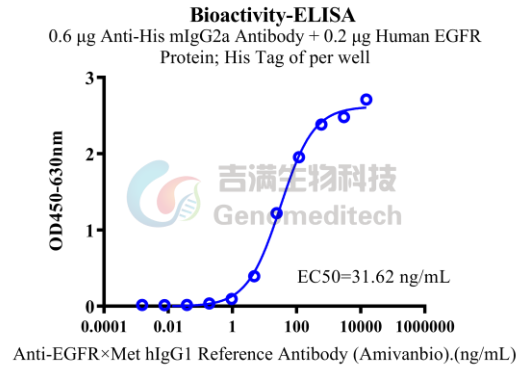


Fig. ELISA

Bioactivity-ELISA

Human HGFR(Met) Protein; His Tag (Catalog # GM-87764RP) was immobilized at 2 µg/ml (100 µL/well) on Anti-His mIgG2a Antibody (Catalog # GM-59493AB) (0.6 µg/well) precoated. Increasing concentrations of Anti-EGFR×Met hIgG1 Reference Antibody (Amivanbio) (Catalog # GM-87783MAB) were added.

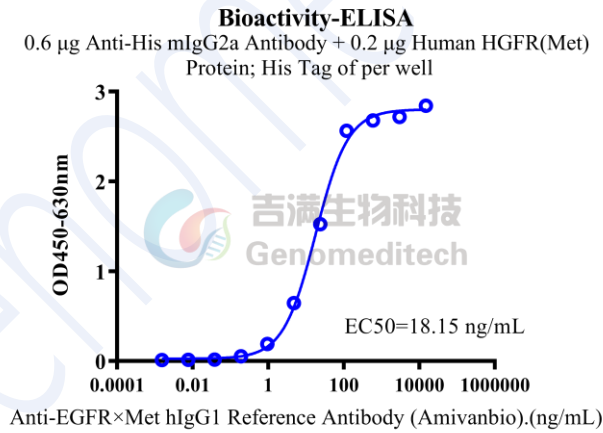


Fig. ELISA