

Anti-CD3 hlgG1 Antibody(13A1)

Product information

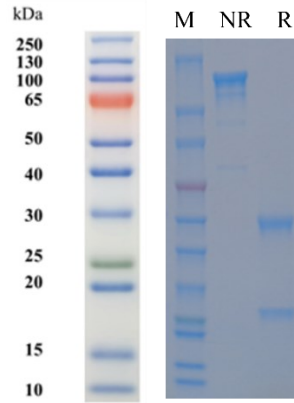
GM-88322AB-10	10 µg
GM-88322AB-100	100 µg
GM-88322AB-1000	1 mg

Antibody Information

Species Reactivity	Human
Clone	13A1
Source/Isotype	Human IgG1, Kappa
Application	/
Specificity	Detects CD3
Gene	CD3
Other Names	CD3epsilon, T3e, Cd3e
Gene ID	916 (Human)
Background	<p>The CD3 gene family encodes the core transmembrane subunits (γ, δ, ϵ, ζ) of the t-cell receptor-CD3(tcr-CD3) complex, where CD3E, CD3G, and CD3D are clustered and localized to human chromosome 11, suggesting that the CD3 gene family is involved in the regulation of t-cell signaling, cD3Z is a T cell lineage-specific marker that is independently localized on chromosome 1; its expression product mediates antigen recognition signal transduction into cells through intracellular regional immunoreceptor tyrosine-activating motifs (Itams) , and the expression of CD3Z on chromosome 1 is associated with the activation of the T cell lineage, regulation of thymic T cell development, peripheral T cell activation, and immune response initiation are key molecular switches of the adaptive immune system.</p>
Storage	Store at 2-8°C short term (1-2 weeks).Store at $\leq -20^{\circ}\text{C}$ long term. Avoid repeated freeze-thaw.
Formulation	Supplied as a 0.2 µm filtered solution of PBS, pH7.2-7.4.
Endotoxin	< 1 EU/mg, determined by LAL gel clotting assay

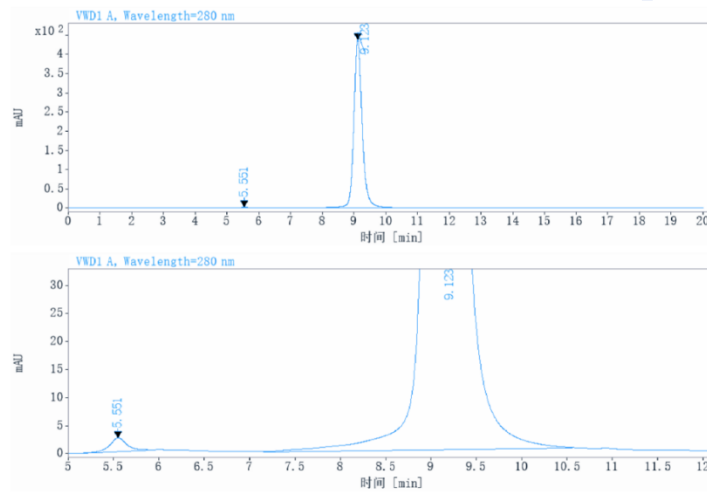
Version:3.2

SDS-PAGE



On SDS-PAGE under reducing (R)/non-reducing(N-R) condition. The gel was stained overnight with Coomassie Blue. The purity of the protein is greater than 95%.

SEC-HPLC



The purity of this product is more than 95% verified by SEC-HPLC.