

## Anti-SSTR2 hIgG1 Antibody(XENP018087)

### Product Information

GM-59883AB-10	10 µg
GM-59883AB-100	100 µg
GM-59883AB-1000	1 mg

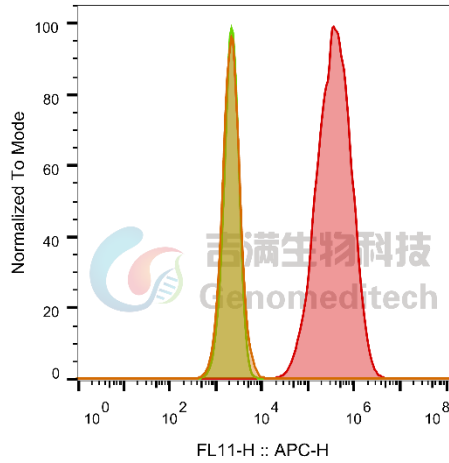
### Antibody Information

Species Reactivity	Human
Specificity	Detects human SSTR2. It also detects cynomolgus SSTR2.
Source/Isotype	Monoclonal human IgG1, κ
Other Names	SST2
Gene ID	6752(human), cynomolgus(102142925)
Application	Flow cytometry: 0.5 µg-2 µg /test; FC-Quality tested
Background	Somatostatin receptor type 2 is a protein that in humans is encoded by the SSTR2 gene. The somatostatin receptor 2 (SSTR2), which belongs to the G-protein coupled receptor family, is a protein which is most highly expressed in the pancreas (both alpha- and beta-cells), but also in other tissues such as the cerebrum and kidney and in lower amount in the jejunum, colon and liver. In the pancreas, after binding to somatostatin, it inhibits the secretion of peptide hormones from pancreatic islets. During development, it stimulates neuronal migration and axon outgrowth. The somatostatin receptor 2 is expressed in most tumors. Patients with neuroendocrine tumors that over-express the somatostatin receptor 2 have an improved prognosis. The over expression of SSTR2 in tumors can be exploited to selectively deliver radio-peptides to tumors to either detect or destroy them. Somatostatin receptor 2 also has the ability to stimulate apoptosis in many cells including cancer cells. The somatostatin receptor 2 is also being looked at as a possible target in cancer treatment for its ability to inhibit tumor growth.
Storage	Store at +4°C short term (1-2 weeks). Store at -20°C long term
Formulation	Phosphate-buffered solution, pH 7.2.

## Data Examples

Flow cytometry

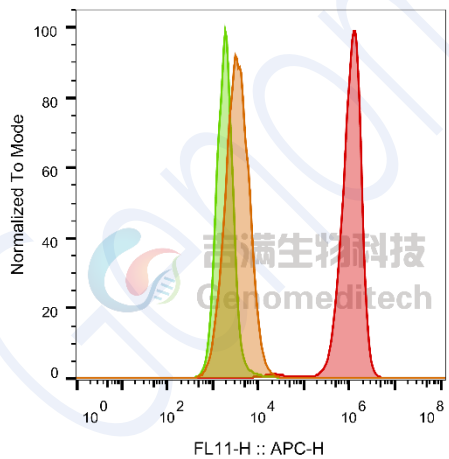
H\_SSTR2 CHO-K1 Cell Line (Catalog # GM-C05171) was stained with Anti-SSTR2 hIgG1 Antibody (Catalog # GM-C28873) or isotype control antibody, followed by anti-Human IgG APC-conjugated Secondary Antibody.



SampleID	Geometric Mean : FL11-H
CHO-K1 anti-SSTR2+APC-2nd Ab	2202
CHO-K1 H_SSTR2 H_IgG+APC-2nd Ab	2185
CHO-K1 H_SSTR2 anti-SSTR2+APC-2nd Ab	356707

Flow cytometry

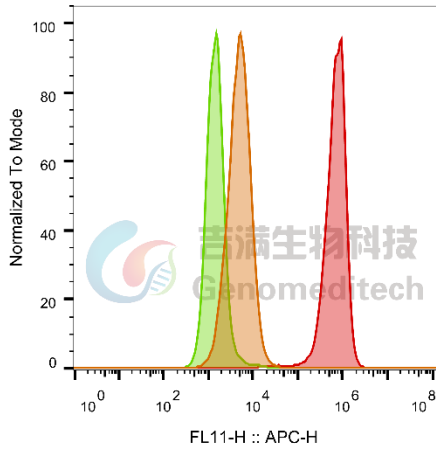
H\_SSTR2 HEK-293 Cell Line (Catalog # GM-C28874) was stained with Anti-SSTR2 hIgG1 Antibody (Catalog # GM-59883AB) or isotype control antibody, followed by anti-Human IgG APC-conjugated Secondary Antibody.



SampleID	Geometric Mean : FL11-H
HEK-293 anti-SSTR2+APC-2nd Ab	3505
HEK-293 H_SSTR2 H_IgG+APC-2nd Ab	1942
HEK-293 H_SSTR2 anti-SSTR2+APC-2nd Ab	1.01E6

Flow cytometry

Cynomolgus\_SSTR2 HEK-293 Cell Line (Catalog # GM-C28875) was stained with Anti-SSTR2 hlgG1 Antibody (Catalog # GM-59883AB) or isotype control antibody, followed by anti-Human IgG APC-conjugated Secondary Antibody.



SampleID	Geometric Mean : FL11-H
HEK-293 anti-SSTR2+APC-2nd Ab	4958
HEK-293 Cyno_SSTR2 H_IgG+APC-2nd Ab	1501
HEK-293 Cyno_SSTR2 anti-SSTR2+APC-2nd Ab	6.54E5