

Human CCR8-N1-35 Protein; mIgG2a Fc Tag

Product Information

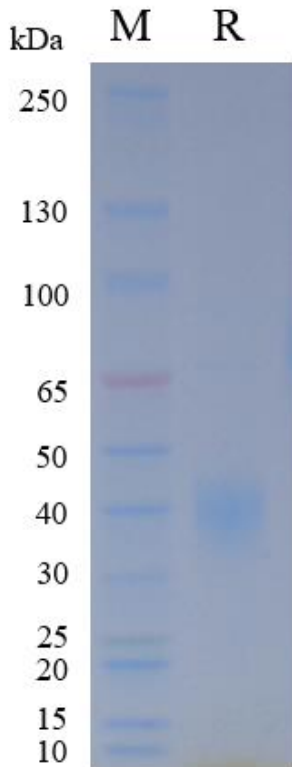
Product Name	Human CCR8-N1-35 Protein; mIgG2a Fc Tag
Storage temp	Store at $\leq -70^{\circ}\text{C}$, stable for 6 months after receipt. Recommend to aliquot the protein into smaller quantities for optimal storage. Please minimize freeze-thaw cycles.
Catalog# / Size	GM-88942RP-100 / 100 μg GM-88942RP-1000 / 1 mg

Protein Information

Alternative Names	CC chemokine receptor 8, CDw198, ChemR1, CKRL1, CKR-L1, CKRL1, CY6, GPRCL1, GPRCY6, GPR-CY6, TER-1
Source	Human CCR8-N1-35 Protein; mIgG2a Fc Tag (GM-88942RP) is expressed from human 293 cells (HEK-293). It contains AA Met1-Lys35 (Accession # P51685-1). This protein carries a mIgG2a Fc at the C-terminus.
Purity	> 95% as determined by SDS-PAGE
Endotoxin	< 1 EU/ μg , determined by LAL gel clotting assay
Predicted Mol Mass	30.3 kDa
Formulation	Supplied as a 0.2 μm filtered solution of PBS, pH7.2-7.4.
Description	<p>CCR8 protein, full name C-C Chemokine Receptor Type 8, is an important cell membrane receptor protein and a member of the G protein-coupled receptor (GPCR) family. CCR8 protein plays a crucial role in regulating chemotaxis, immune cell migration, and inflammatory responses in normal immune homeostasis.</p> <p>Abnormal expression or dysregulation of CCR8 protein is closely associated with the occurrence and development of various diseases, especially tumor immunity, autoimmune diseases, and inflammatory disorders. In the tumor microenvironment, overexpression of CCR8 protein is predominantly observed on regulatory T cells (Tregs) and is associated with enhanced Treg immunosuppressive function, thereby promoting tumor immune evasion and disease progression.</p> <p>In summary, CCR8 protein plays a crucial role in immune regulation and the pathogenesis of tumors and inflammatory diseases. It is of great significance for understanding disease mechanisms, selecting targeted treatment strategies, and evaluating patient prognosis in both oncology and autoimmune disease settings.</p>

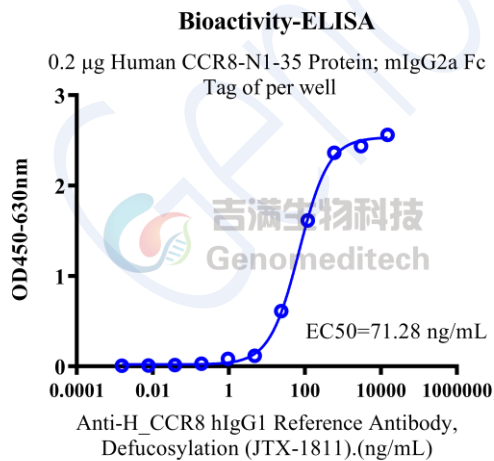
Version:4.0

SDS-PAGE



On SDS-PAGE under reducing (R) condition. The gel was stained overnight with Coomassie Blue. The purity of the protein is greater than 95%.

Bioactivity-ELISA



Human CCR8-N1-35 Protein; mIgG2a Fc Tag (Catalog # GM-88942RP) was immobilized at 2 µg/ml (100 µL/well). Increasing concentrations of Anti-H_CCR8 hIgG1 Reference Antibody, Defucosylation (JTX-1811) (Catalog # GM-86919MAB) were added.