

# Anti-CD38 hlgG1 Antibody(Daratumumab)

## Product Information

GM-27202AB-10	10 µg
GM-27202AB-100	100 µg
GM-27202AB-1000	1 mg

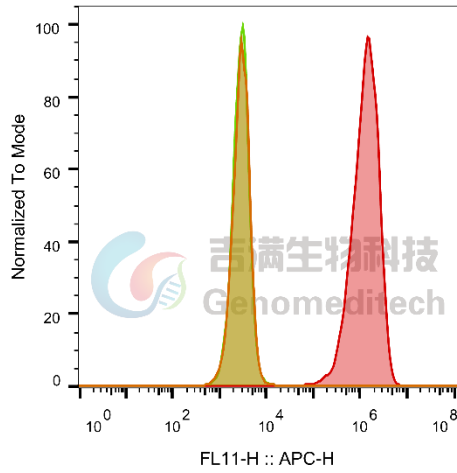
## Antibody Information

Species Reactivity	Human
Clone	Daratumumab
Source/Isotype	Monoclonal IgG1, κ
Application	Flow cytometry
Specificity	Detects CD38.
Gene	CD38
Other Names	ADPRC 1, ADPRC1, cADPR1
Gene ID	952
Background	CD38 (cluster of differentiation 38), also known as cyclic ADP ribose hydrolase is a glycoprotein found on the surface of many immune cells (white blood cells), including CD4+, CD8+, B lymphocytes and natural killer cells. CD38 also functions in cell adhesion, signal transduction and calcium signaling. CD38 is most frequently found on plasma B cells, followed by natural killer cells, followed by B cells and T cells, and then followed by a variety of cell types. CD38 can function either as a receptor or as an enzyme. As a receptor, CD38 can attach to CD31 on the surface of T cells, thereby activating those cells to produce a variety of cytokines.
Storage	Store at 2-8°C short term (1-2 weeks). Store at ≤ -20°C long term. Avoid repeated freeze-thaw.
Formulation	Phosphate-buffered solution, pH 7.2.
Endotoxin	< 1 EU/mg, determined by LAL gel clotting assay

## Data Examples

Flow cytometry

H\_CD38 CHO-K1 Cell Line (Catalog # GM-C19006) was stained with Anti-CD38 hlgG1 Antibody(Daratumumab) (Catalog # GM-27202AB) or isotype control antibody, followed by anti-Human IgG APC-conjugated Secondary Antibody.



SampleID	Geometric Mean : FL11-H
CHO-K1 anti-CD38+APC-2nd Ab	2931
CHO-K1 H_CD38 H_IgG+APC-2nd Ab	2898
CHO-K1 H_CD38 anti-CD38+APC-2nd Ab	1.24E6

Fig. FACS